



DON BOSCO COLLEGE OF ARTS AND SCIENCE, KEELA ERAL

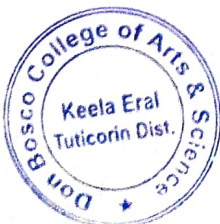
Accredited with 'B' Grade by NAAC 1st Cycle

Affiliated to Manonmaniam Sundaranar University, Tirunelveli

TABLE OF CONTENT

6.2.1. THE INSTITUTIONAL STRATEGIC/PERSPECTIVE PLAN

| S.NO | THE INSTITUTIONAL STRATEGIC/PERSPECTIVE PLAN |
|------|--|
| 1 | ICT (E-CONTENT, YOUTUBE) |
| 2 | GENESIS AND GROWTH |
| 3 | VISION, MISSION AND MOTTO |
| 4 | QUALITY POLICY |
| 5 | QUALITY OBJECTIVES |
| 6 | CORE VALUE AND PRINCIPLES |
| 7 | LONG-TERM GOALS AND SHORT TERM |



M. S. 7

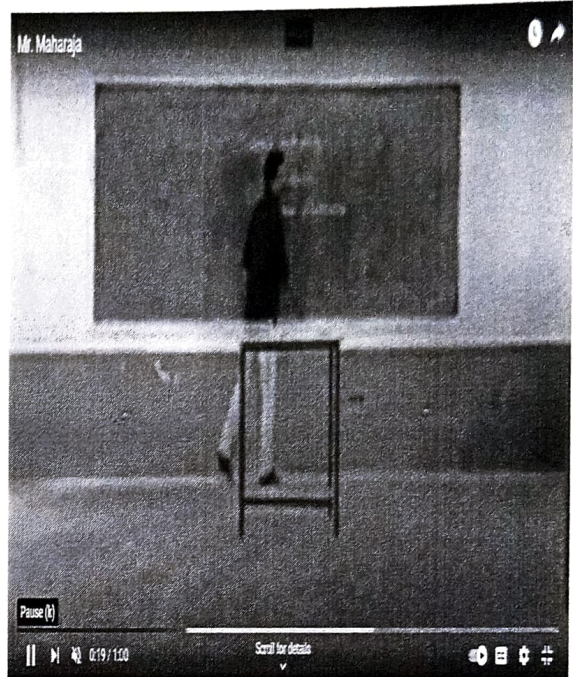
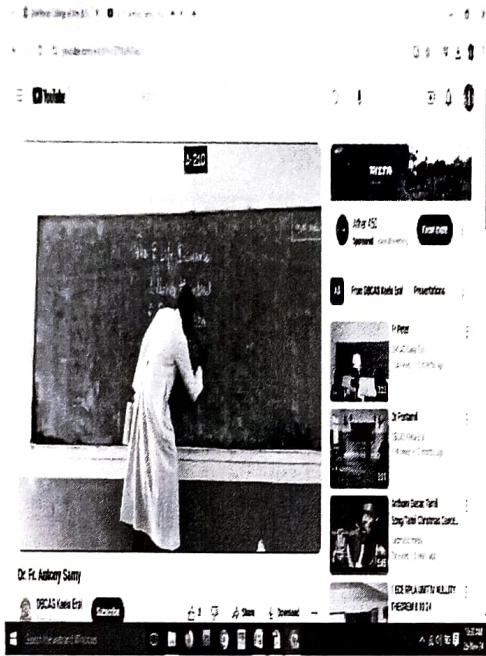
E-CONTENT

| S.N O | NAME OF THE FACULTY | DEPARTMENT | YOUTUBE LINK |
|----------|------------------------|------------|---|
| 1 | Dr.M.ANTONY SAMY | B.COM | https://youtu.be/ZINaJNFkajI?si=Ao5JaKXn8xxj7NIg |
| 2 | Dr.A.PONMANI | B.COM | https://youtu.be/tnyDdz7LqeA?si=agd62qvyda2VR5-T |
| 3 | Dr. THIBURSIUS | ENGLISH | https://youtu.be/DBgV244NE.D8?si=IGnkO0B59k5oifMI |
| 4 | Ms.MASHILA MATHIARASI | ENGLISH | https://youtu.be/mf4yDDCRkLk?si=z_UJZFrNjycfZbfp |
| 5 | V.P SUJITHA | ENGLISH | https://youtu.be/M6Us7plpwbU?si=b-ITFpY4qw0TP69o |
| 6 | A.ARPUTHARAJ | ENGLISH | https://youtu.be/fgR63-p-eGQ?si=xFskKGFuGyibXLY8 |
| 7 | Rev.A.PETER AROCKIARAJ | MATHS | https://youtu.be/Vs1a1CbE51g?si=gTtMnL.Pqb0j-ate- |
| 8 | Dr.A.ANUSIYA | MATHS | https://youtu.be/X4REDR0Z4qk?si=MEDkPidkU4kc7ujp |
| 9 | Mrs.AMBIKA | MATHS | https://youtu.be/KEzJVPintiU?si=y8KsP7k0-11DmQjH |
| 10 | Dr.G.TAMILARASI | TAMIL | https://youtu.be/8anhBinIEYo?si=yPwnkyQgm-q3eAak |
| 11 | MR.RAVEEINDRAN | TAMIL | https://youtu.be/8GwVRZW_h-4?si=gulVQmaBeAw14y12 |
| 12 | Mrs.S.THEIVARATHINA | TAMIL | https://youtu.be/QDEODUYS-Vs?si=H6S7QLVWb6p8o2zM |
| 13 | Mr.M.MAKESHKUMAR | TAMIL | https://youtu.be/Ufj_cLZgffE?si=AQg6wA2bgk8dWGq0 |
| 14 | Mr.M.MAHARAJAN | B.COM | https://youtu.be/tJ8W_q0gZGo?si=9RXY50MHsSEyvZ7a |
| 15 | Mrs.D.KANMANI | BBA | https://youtu.be/ASQOOO9HWaI?si=tuLB74F4SjDnZXXJ |
| 16 | Ms.M.NIVETHA | BBA | https://youtu.be/be2tAZIfCys?si=Nf6YlM0RRLWcFla9 |
| 17 | Dr.M.SIVASANKARI | BCA | https://youtu.be/SAQo7VF9Fc4?si=wZPGDhQcJYzSRUoU |
| 18 | Dr.M.SIVASANKARI | BCA | https://youtu.be/_1iRdUu0ygg?feature=sharedukA?si=8GFYWX8zDmUqK19o |
| 19 | Dr.S.ALEXANDERSURESH | BCA | https://youtu.be/yZzw2Te-ukA?si=8GFYWX8zDmUqK19o |
| | Dr.S.ALEXANDERSURESH | BCA | https://youtu.be/z0lFd3XuiK4?si=4fCOx7ksVrL9xhgg |

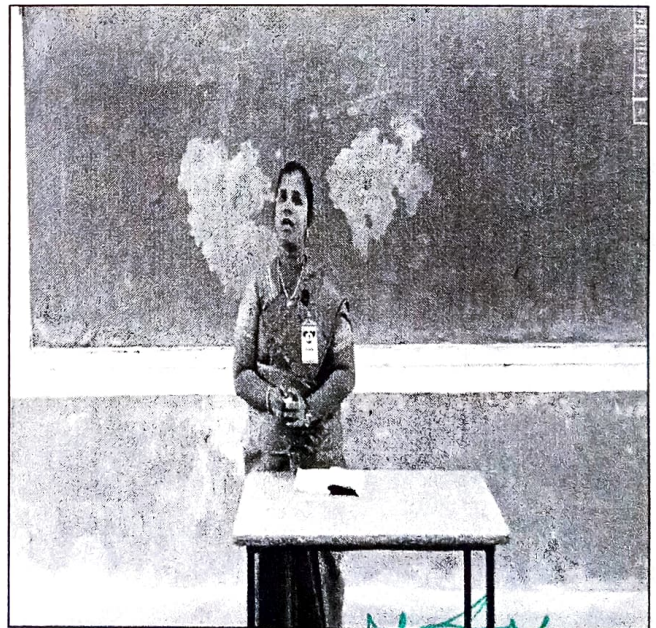
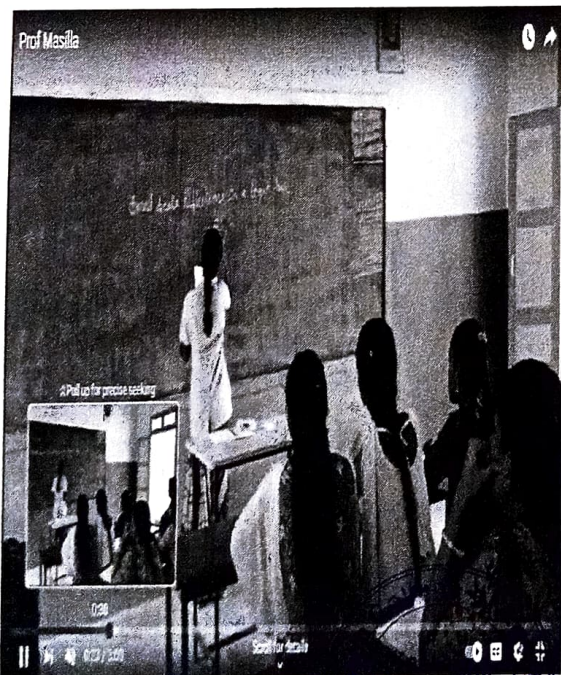
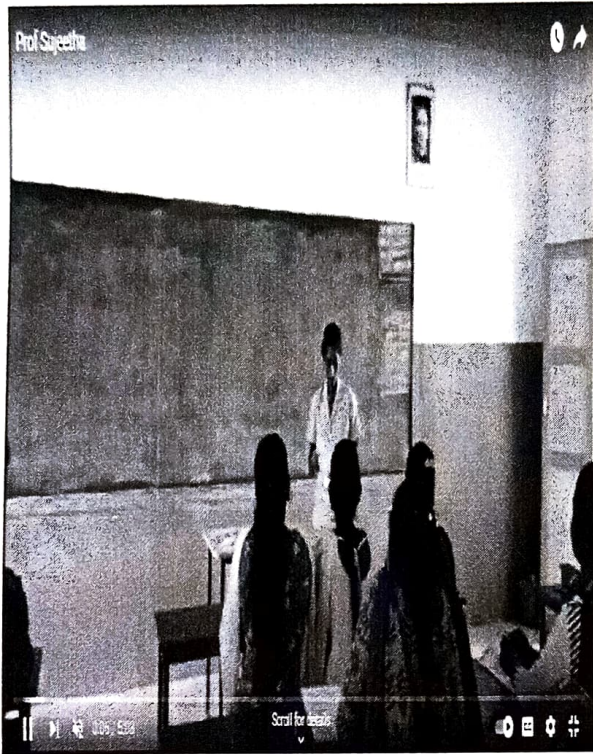



 PRINCIPAL
 Don Bosco College of Arts & Science
 KEELA ERAL

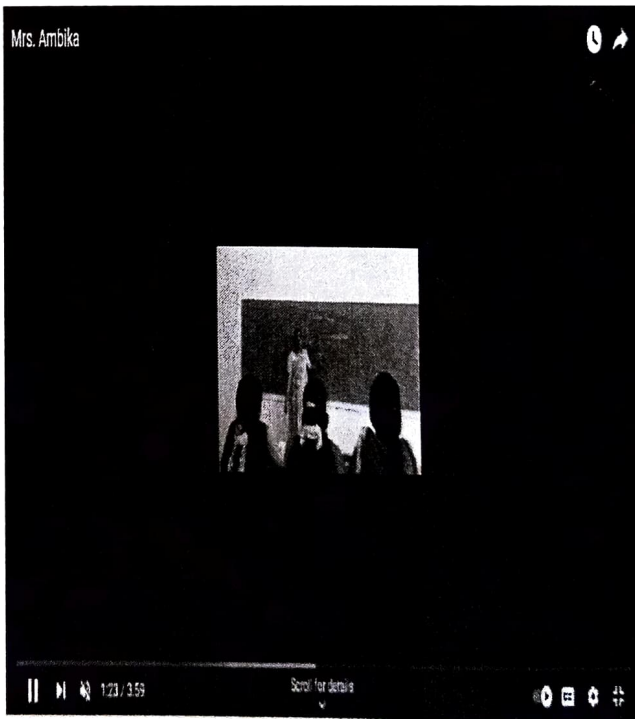
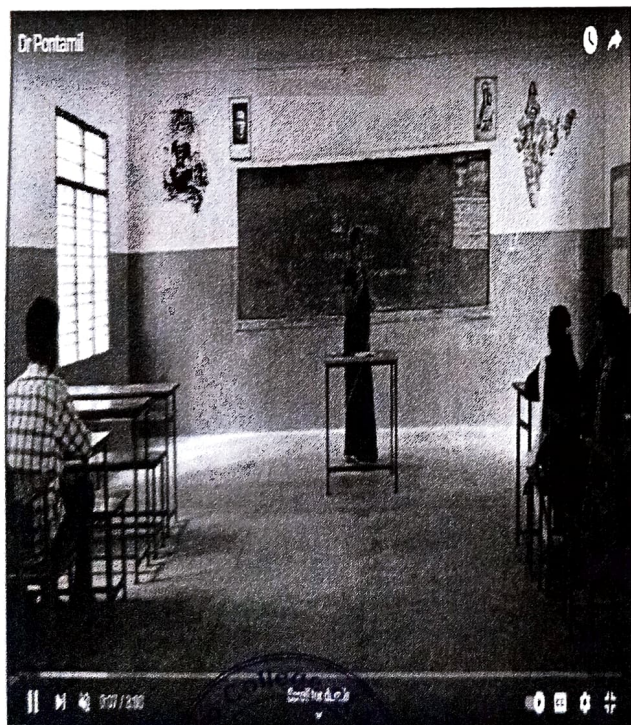
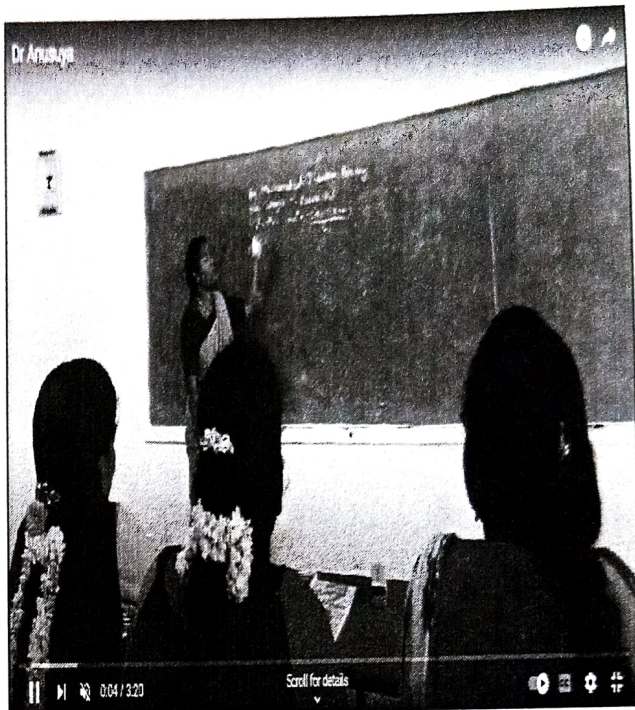
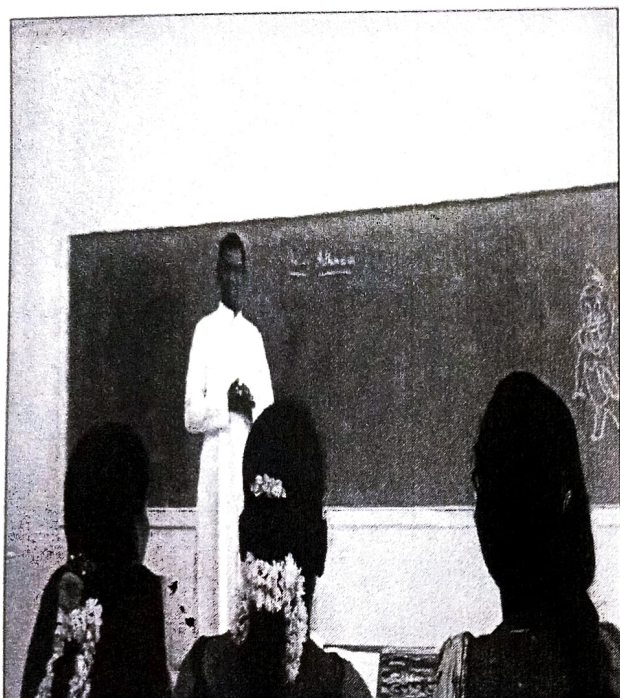
WEBSITE / YOUTUBE SCREENSHOT



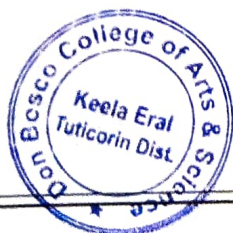
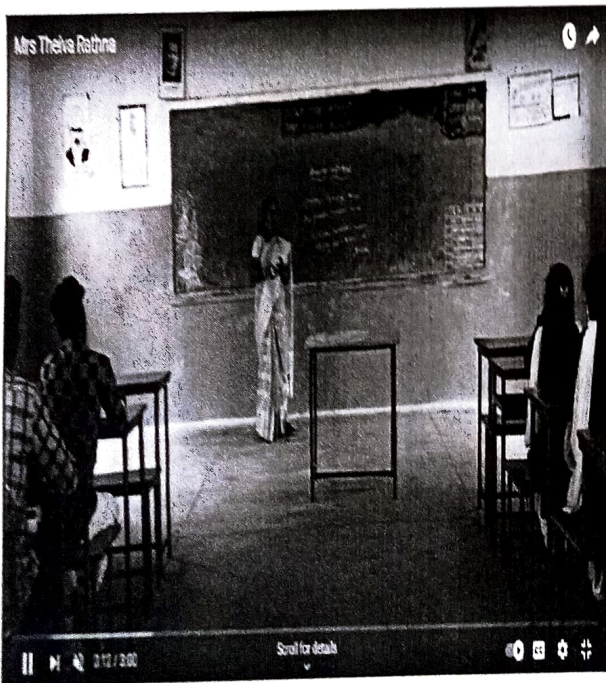
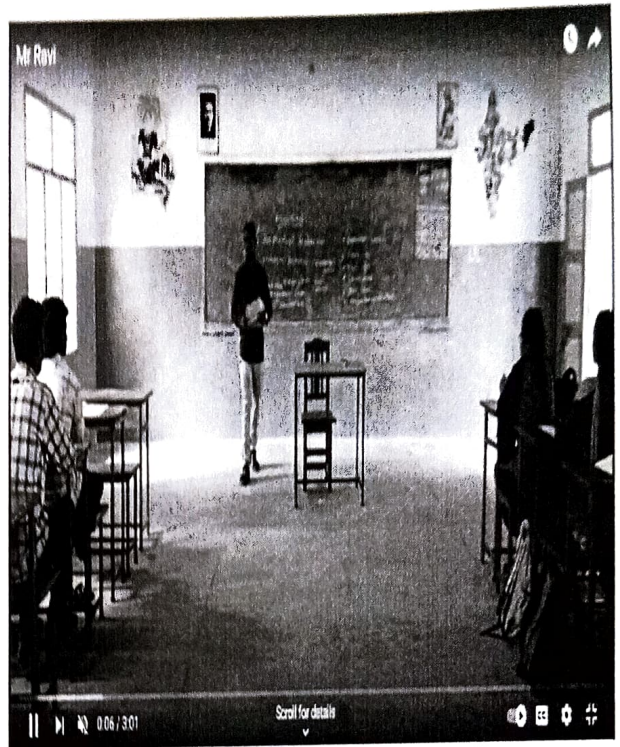
M. S. J.
PRINCIPAL
Don Bosco College of Arts & Science
KEELA ERAL



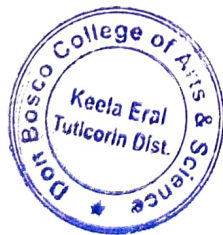
M. S. Jay
PRINCIPAL
Don Bosco College of Arts & Science
KEELA ERAL



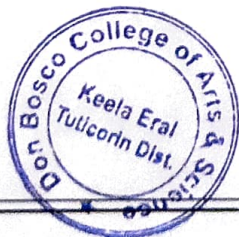
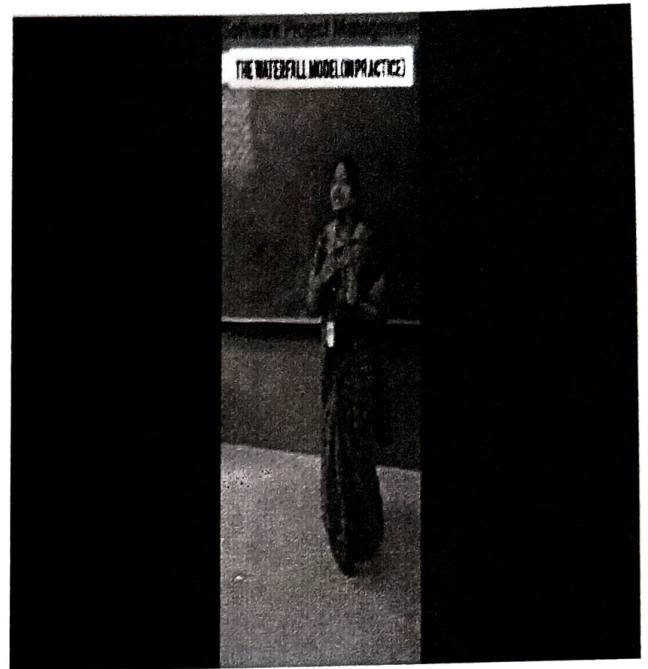
M.A.A.
PRINCIPAL
Don Bosco College of Arts & Science
KEELA ERAL



M. S. J.
PRINCIPAL
Don Bosco College of Arts & Science .
KEELA ERAL




PRINCIPAL
Don Bosco College of Arts & Science
KEELA ERAL




PRINCIPAL
Don Bosco College of Arts & Science
KEELA ERAL

GENESIS AND GROWTH



DON BOSCO COLLEGE OF ARTS AND SCIENCE

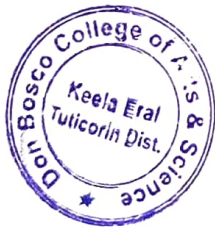
Accredited with 'B' grade by NAAC (1st Cycle)

Affiliated to Manonmaniam Sundaranar University, Tirunelveli

KEELA ERAL, THOOTHUKUDI (DT) – 628 908

GENESIS AND GROWTH

The College was inaugurated on 16th August 2013. Since its inception, it serves for the upliftment of poor youth in the surroundings. It was started with 77 students in Block A and B. These blocks had 12 classrooms and one Auditorium, Library, Office, Canteen, Hostel and Sports Ground. We had four UG Courses (BCA, B.Sc (Mathematics), B.Com, BA(English)) till 2013. In 2014 BBA and MA (English) courses were introduced and in 2017 BA(Tamil) and B. Com (Revised) courses were introduced. At present we have six UG Courses and One PG Programme. Over the years the college has registered gradual growth at all levels. In 2018 Block C was inaugurated. It has an Audio-visual Hall and an Auditorium. In 2021 air-conditioned conference hall was inaugurated.




PRINCIPAL
Don Bosco College of Arts & Science
KEELA ERAL.



DON BOSCO COLLEGE OF ARTS AND SCIENCE

Accredited with 'B' grade by NAAC (1st Cycle)

Affiliated to Manonmaniam Sundaranar University, Tirunelveli

KEELA ERAL, THOOTHUKUDI (DT) – 628 908

MOTO

"Enlighten and Empower"

VISION:

To Enlightenment and Empowerment of the Youth towards Personal and Social Transformation

MISSION:

1. To make higher education qualitative, inclusive, cost effective and accessible to the rural masses.
2. To exercise a preferential option in favor of the rural youth especially the First Generation Learners and socially and economically weaker sections of the society.
3. To facilitate the actualization of individual potential, integrating knowledge, skills, values and behaviour and prepare the students to face the global opportunities and challenges of a meaningful life and career.
4. To constantly pursue higher standards of excellence, integrity and credibility in all endeavors and transform the students, in collaboration with all the stakeholders of higher education, to be agents of social transformation.




PRINCIPAL
Don Bosco College of Arts & Science
KEELA ERAL



DON BOSCO COLLEGE OF ARTS AND SCIENCE

Accredited with 'B' grade by NAAC (1st Cycle)

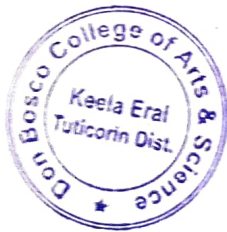
Affiliated to Manonmaniam Sundaranar University, Tirunelveli

KEELA ERAL, THOOTHUKUDI (DT) – 628 908

QUALITY POLICY

In Don Bosco College of Arts and Science, we strive towards:

- Making a significant contribution to nation-building.
- Ensuring excellence in all aspects of Academics.
- Instilling a strong value system to make them honest citizens and good human beings
- Nurturing the holistic growth of our students.
- Mentoring the students for both personal and career growth
- Enabling the students to actualize their potentials.
- Educating the students to be socially responsible as a moral obligation.




PRINCIPAL
Don Bosco College of Arts & Science
KEELA ERAL



DON BOSCO COLLEGE OF ARTS AND SCIENCE

Accredited with 'B' grade by NAAC (1st Cycle)

Affiliated to Manonmaniam Sundaranar University, Tirunelveli

KEELA ERAL, THOOTHUKUDI (DT) – 628 908

OBJECTIVES

- ❖ To groom intellectually competent, professionally efficient, socially responsible and morally upright persons through holistic and innovative educational system of Don Bosco.
- ❖ To ensure and support quality physical infrastructure for promoting effective academic interplay.
- ❖ To help students develop competence, commitment and compassion.
- ❖ To collaborate with institutions and execute subject - based projects to develop rural India.
- ❖ To equip the students with employability skills.




PRINCIPAL
Don Bosco College of Arts & Science
KEELA ERAL



DON BOSCO COLLEGE OF ARTS AND SCIENCE

Accredited with 'B' grade by NAAC (1st Cycle)

Affiliated to Manonmaniam Sundaranar University, Tirunelveli

KEELA ERAL, THOOTHUKUDI (DT) – 628 908

CORE VALUE

- Inculcating human values and a sense of patriotism
- Accounting human dignity
- Creating value based education
- Fostering global competencies

PRINCIPLES

- To maintain unique Academic Excellence.
- To inculcate academic ethics.
- To equip the students with global competencies.
- To bring out the inner power and potential in youth and channelize them towards nation-building.
- To engage in relevant research activities.
- To promote community oriented programmes.




PRINCIPAL
Don Bosco College of Arts & Science
KEELA ERAL



DON BOSCO COLLEGE OF ARTS AND SCIENCE

Accredited with 'B' grade by NAAC (1st Cycle)

Affiliated to Manonmaniam Sundaranar University, Tirunelveli

KEELA ERAL, THOOTHUKUDI (DT) – 628 908

Goal 1: to maintain unique Academic Excellence

Short-Term Goals:

- Implement regular assessments and feedback mechanisms to track student performance.
- Establish a mentoring system for students to foster academic growth.
- Develop specialized workshops or seminars focused on advanced learning techniques.
- Create a well-rounded curriculum that blends theoretical knowledge with practical skills.

Long-Term Goals:

- Build a reputation as a leading institution in academic excellence both nationally and internationally.
- Achieve continuous improvement in academic rankings and student success metrics.
- Establish partnerships with top universities and research organizations to foster academic exchange programs.
- Cultivate a tradition of high-achieving graduates who contribute significantly to their respective fields.

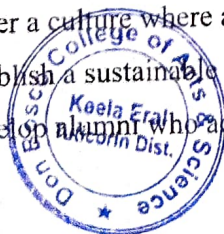
Goal 2: To inculcate academic ethics

Short-Term Goals:

- Introduce academic integrity workshops that emphasize the importance of honesty, responsibility, and ethical behavior in studies.
- Create a code of conduct for students and faculty that clearly outlines expectations for academic integrity.
- Promote an environment that discourages plagiarism and unethical practices through educational initiatives.

Long-Term Goals:

- Foster a culture where academic ethics are central to the institution's identity.
- Establish a sustainable system for detecting and preventing academic dishonesty.
- Develop alumni who advocate for ethical academic practices in their professional lives.



PRINCIPAL
Don Bosco College of Arts & Science
KEELA ERAL

Goal 3: To equip the students with global competencies

Short-Term Goals:

- Introduce global perspectives into the curriculum through courses on international relations, intercultural communication, and global economics.
- Organize international exposure programs, including internships, study tours, and virtual exchange programs.
- Provide language learning opportunities and soft skill development to enhance global competencies.

Long-Term Goals:

- Create a network of international partnerships with universities and organizations to facilitate student exchange and collaborative research.
- Ensure that graduates are well-equipped to succeed in diverse global environments, with high employability in international markets.
- Establish the institution as a hub for global learning and innovation.

Goal 4: To bring out the inner power and potential in youth and channelize them towards nation-building

Short-Term Goals:

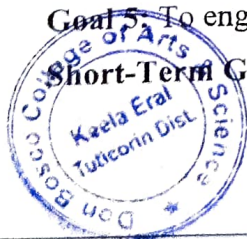
- Establish student leadership programs that encourage critical thinking, problem-solving, and social responsibility.
- Organize community service and outreach activities to instill a sense of responsibility towards nation-building.
- Create workshops and motivational sessions to help students discover their potential.

Long-Term Goals:

- Develop a generation of leaders who actively contribute to the social, economic, and political advancement of the nation.
- Create a network of alumni who are committed to nation-building through entrepreneurship, leadership, and social activism.
- Foster a long-lasting tradition of civic engagement within the institution.

Goal 5: To engage in relevant research activities

Short-Term Goals:



M.A.F.
PRINCIPAL
Don Bosco College of Arts & Science
KEELA ERAL

Set up research workshops, conferences, and seminars that encourage student and faculty participation in cutting-edge research.

Provide seed funding and support for student and faculty-led research projects.

Establish interdisciplinary research groups focused on contemporary global challenges.

Long-Term Goals:

Develop a reputation for producing high-impact, interdisciplinary research that addresses global and national issues.

Publish research in top-tier journals and collaborate with renowned global researchers.

Secure funding for large-scale, long-term research projects and create a research institute within the institution.

Goal 6: To promote community-oriented programs

Short-Term Goals:

Establish partnerships with local communities to identify areas of need and address social issues through volunteer work and development projects.

Organize outreach programs where students actively engage with communities on education, health, and environmental sustainability.

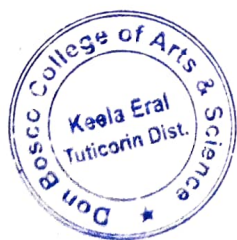
Host workshops, events, and talks that raise awareness of societal issues and encourage student involvement in community development.

Long-Term Goals:

Develop a sustainable model for community engagement that integrates students, faculty, and local organizations.

Establish community-oriented initiatives that have a long-lasting impact on local and national development.

Create a legacy of social responsibility within the student body that extends far beyond graduation.




PRINCIPAL
Don Bosco College of Arts & Science
KEELA ERAL